

General Refuse Collection

TUESDAY

Clare (North of Lennon St/Victoria Rd)

& Armagh

(Includes all of Lennon Street & Victoria Road)

WEDNESDAY

Clare (South of Lennon Street/Victoria Road),

Sevenhill, Mintaro, Watervale & Auburn

(Includes all rural refuse collections along

Main North Road between Clare and Auburn,

and along the Saddleworth-Auburn Road)

What Type of Bin Do I Need?

THURSDAY

Manoora, Marrabel, Rhynie, Riverton,

Saddleworth, Stockport, Tarlee,

Undalya & Waterloo

How to Assist Council to Empty Your Refuse Bins

Please ensure the bin is:

- Facing the road
- Placed in an accessible position
- Placed at least 30cm clear of all obstacles
- Not placed behind a parked car
- Not over-full, the lid must be closed
- Not damaged
- Out by 6.00am on the day of collection

Council will not empty your refuse bin if:

- It is packed too tightly and will not empty
 - It is too heavy
 - It is over-full therefore lifting would cause spills on the road
-

COLLECTION ENTITLEMENTS

Landowners (including schools and businesses)

are entitled to ONE refuse and recycling

collection only per rateable property.

CLARE & GILBERT VALLEYS COUNCIL
4 Gleeson Street CLARE SA 5453
Enquiries (08) 8842 6400



CLARE & GILBERT
VALLEYS COUNCIL

REFUSE COLLECTION 2019

REFUSE BIN

140 LITRES

COLLECTED WEEKLY

RECYCLING BIN

240 LITRES

COLLECTED FORTNIGHTLY

**ALL BINS ARE TO BE OUT FOR
COLLECTION BY 6:00am
ON THE DAY OF PICK UP**

Last Updated 22 January 2019

W:\Customer Services\Public-General Documents\Refuse Brochure 2019.pub

Recycling Calendar



**Northern Area
Collection Day**

Clare, Sevenhill,
Armagh



**Southern Area
Collection Day**

Auburn, Manoora, Marrabel,
Mintaro, Rhynie, Riverton,
Saddleworth, Stockport,
Tarlee, Waterloo, Watervale

(Includes all rural collection
south of Sevenhill)



2019

January

Su	Mo	Tu	We	Th	Fr	Sa
	1	2	3	4	5	

6	7	8	9	10	11	12
13	14	15	16	17	18	19
20	21	22	23	24	25	26
27	28	29	30	31		

April

Su	Mo	Tu	We	Th	Fr	Sa
	1	2	3	4	5	6

7	8	9	10	11	12	13
14	15	16	17	18	19	20
21	22	23	24	25	26	27
28	29	30				

July

Su	Mo	Tu	We	Th	Fr	Sa
	1	2	3	4	5	6

7	8	9	10	11	12	13
14	15	16	17	18	19	20
21	22	23	24	25	26	27
28	29	30	31			

October

Su	Mo	Tu	We	Th	Fr	Sa
	1	2	3	4	5	

6	7	8	9	10	11	12
13	14	15	16	17	18	19
20	21	22	23	24	25	26
27	28	29	30	31		

February

Su	Mo	Tu	We	Th	Fr	Sa

3	4	5	6	7	8	9
10	11	12	13	14	15	16
17	18	19	20	21	22	23
24	25	26	27	28		

May

Su	Mo	Tu	We	Th	Fr	Sa

1	2	3	4	5	6	7
8	9	10	11	12	13	14
15	16	17	18	19	20	21
22	23	24	25	26	27	28

August

Su	Mo	Tu	We	Th	Fr	Sa

1	2	3	4	5	6	7
8	9	10	11	12	13	14
15	16	17	18	19	20	21
22	23	24	25	26	27	28

November

Su	Mo	Tu	We	Th	Fr	Sa

1	2	3	4	5	6	7
8	9	10	11	12	13	14
15	16	17	18	19	20	21
22	23	24	25	26	27	28

March

Su	Mo	Tu	We	Th	Fr	Sa

1	2	3	4	5	6	7
8	9	10	11	12	13	14
15	16	17	18	19	20	21
22	23	24	25	26	27	28

June

Su	Mo	Tu	We	Th	Fr	Sa

1	2	3	4	5	6	7
8	9	10	11	12	13	14
15	16	17	18	19	20	21
22	23	24	25	26	27	28

September

Su	Mo	Tu	We	Th	Fr	Sa

1	2	3	4	5	6	7
8	9	10	11	12	13	14
15	16	17	18	19	20	21
22	23	24	25	26	27	28

December

Su	Mo	Tu	We	Th	Fr	Sa

1	2	3	4	5	6	7
8	9	10	11	12	13	14
15	16	17	18	19	20	21
22	23	24	25	26	27	28

○ = collection day changed due to public holiday

RECYCLING ONLY

IN THIS BIN

Rinsed with tops off



GLASS

All glass bottles
and jars



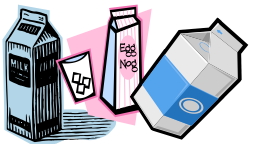
ALL PLASTIC CONTAINERS

With tops off
(No plastic bags)



CANS

Steel and
aluminium



CARTONS

Milk and juice



PAPER & CARDBOARD

Clean newspaper,
magazines,
writing paper,
cardboard and
phone books

NOT IN THIS BIN



CERAMICS

Crockery, terracotta,
broken glass



GARDEN and

HOUSEHOLD WASTE



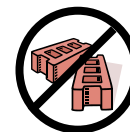
PLASTIC BAGS



OIL, ACID and
CHEMICALS



CLOTHING



HARD

MATERIALS

Concrete, rocks,
bricks, timber



IMPORTANT

Public Holiday

Collection Changes

New Years Day - Tues 1 Jan
Refuse collection as normal

Good Friday - Fri 19 Apr
Recycling collection on
Thurs 18 Apr

Thurs 18 Apr refuse collection
will be on Wed 17 Apr

ANZAC Day - Thurs 25 Apr
Refuse collection on Wed 24
Apr

Christmas Day - Wed 25 Dec
Refuse collection on Thurs 26
Dec

Proclamation Day - Thurs 26
Dec
Refuse collection as normal